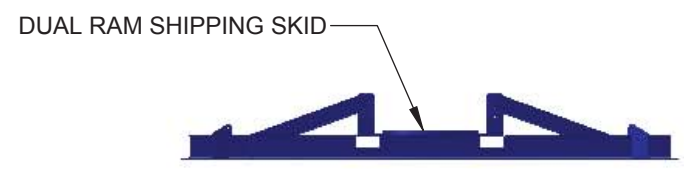


REV.	DATE	DESCRIPTION	BY	CHECKED
A	4/30/2012	INITIAL RELEASE	C. WILLIAMS	N. MASC.
B	1/9/2013	UPDATED SCOPE OF SUPPLY	M. STEEL	C. WILLIAMS



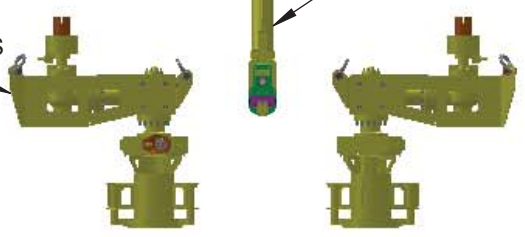
2X CONNECTOR TEST STANDS



DEBRIS CAP



2X FLOWLINE CONNECTORS (WITH CHOKES)

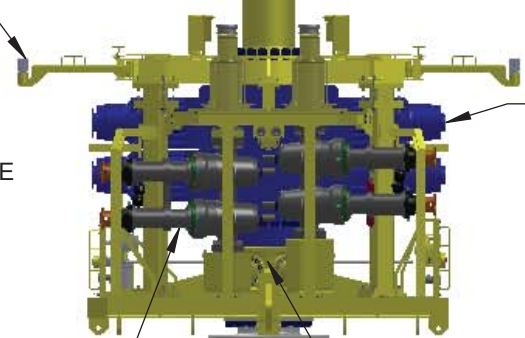


DRILL PIPE - WIRELINE ADAPTER



2X ACOUSTIC TRANSPONDERS (SHOWN OUTBOARD)

H4 MANDREL

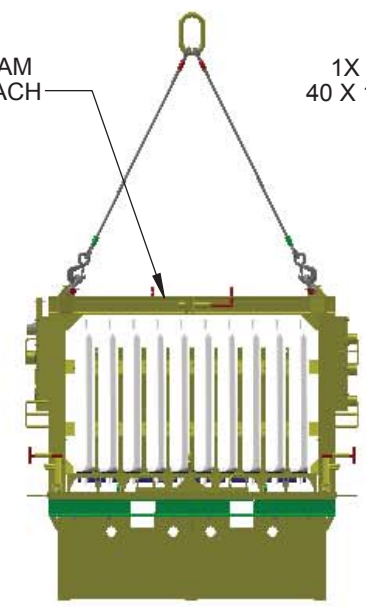


18-3/4" 15K DUAL RAM

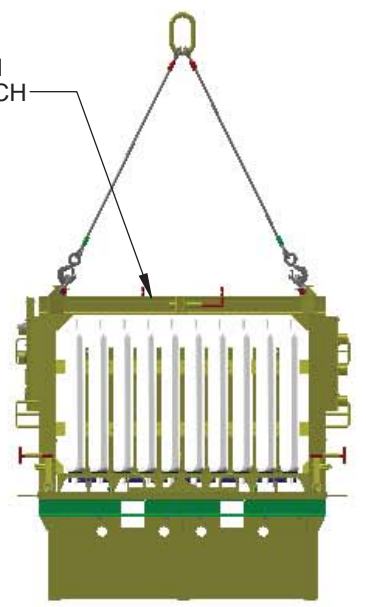
8X 5-1/8" 15K GATE VALVES

3X PP/PT SENSORS (NOT SHOWN)

1 X EXPANSION SAM 40 X 15 GALLON EACH



1X CONTROL SAM 40 X 15 GALLON EACH



H4 TEST CAP (SURFACE ONLY)



18-3/4" 15K BLIND FLANGE



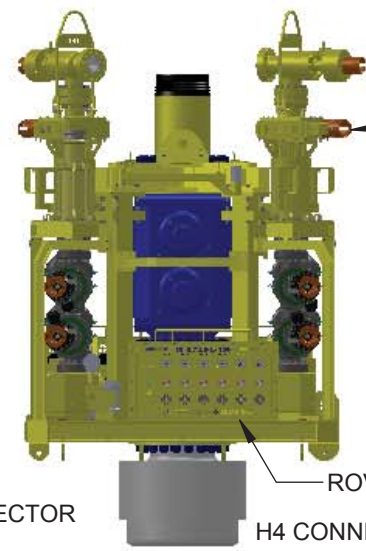
LIFTING EYE



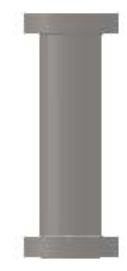
HC CONNECTOR



2X CHOKE CONNECTORS (SOFT SHUT-IN)



3M SPACER SPOOL



2M SPACER SPOOL



1M SPACER SPOOL

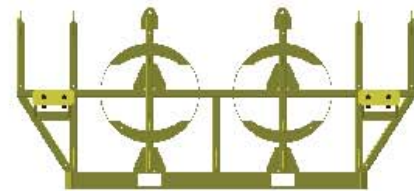


ROV PANELS

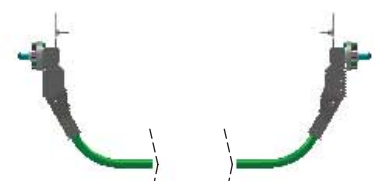
H4 CONNECTOR



ADAPTER SPOOL RUNNING TOOL



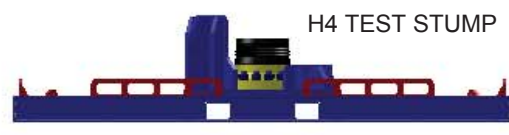
HFL DEPLOYMENT FRAME



16 LINE HYDRAULIC FLYING LEAD WITH JUNCTION PLATES



HC TEST STUMP



ASSEMBLY / TEST STAND

H4 TEST STUMP



HC ADAPTER SPOOL



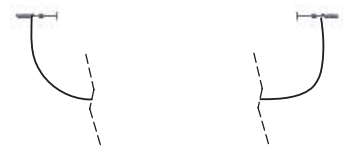
H4 ADAPTER SPOOL



H4 SACRIFICIAL SPOOL



HORIZONTAL SHIPPING FRAME



2X 1" LINE HYDRAULIC FLYING LEADS



INSPECTION STAND

NOTES:

		DWG. NO. SWR-TE-UA-DWG-00010		REV. 2
TRENDSETTER ENGINEERING, INC. 10430 RODGERS ROAD, HOUSTON, TEXAS 77070				
<small>UNLESS OTHERWISE NOTED: UNITS ARE IN INCHES (MILLIMETERS) FRACTIONS: ± 1/16 DECIMALS: ± 0.03 XXX ± 0.015 X.XXX ± 0.005 ANGLES: ± 1/2° CONCENTRIC: .005 BREAK EDGES: .03 MACH-SURFACE: 125 THIRD ANGLE PROJECTION</small>		<small>THIS DOCUMENT CONTAINS INFORMATION WHICH IS PROPRIETARY TO TRENDSETTER ENGINEERING, INC. THE INFORMATION CONTAINED HEREIN SHALL NOT BE DISCLOSED, DUPLICATED, USED IN WHOLE OR IN PART FOR ANY PURPOSE OTHER THAN TO EVALUATE THIS DOCUMENT.</small>		TITLE: SCOPE OF SUPPLY 18-3/4" 15 KSI CAPPING STACK SWRP
DRAWN BY C. WILLIAMS	DATE 4/30/2012	DWG. NO. TEI-100695-LO-02	REV. B	
CHECK BY N. MASC.	DATE 4/30/2012	SCALE: NTS	SHEET 1 OF 2	
PREP BY C. WILLIAMS	DATE 4/30/2012			

8 7 6 5 4 3 2 1

D
C
B
A

D
C
B
A



CONNECTOR
SOFTLAND SYSTEM



CONNECTOR
DRAWDOWN TOOL



HUB CLEANING TOOL



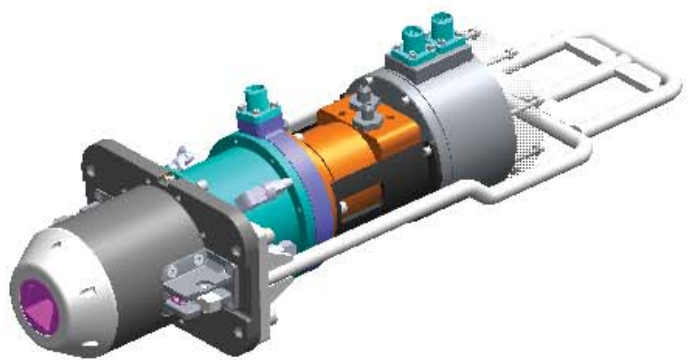
NITROGEN BOOSTER PUMP



TOOL CHEST WITH HAND TOOLS



BORE TEST HPU



CLASS 4 TORQUE TOOL



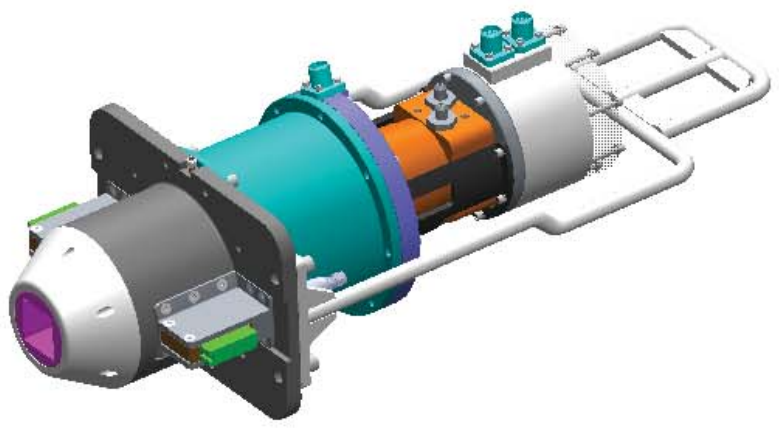
API FLANGE NUT TORQUE TOOLS



PNEUMATIC PUMP FOR
FLANGE NUT TORQUE TOOL



TOOLING HPU



CLASS 5 TORQUE TOOL

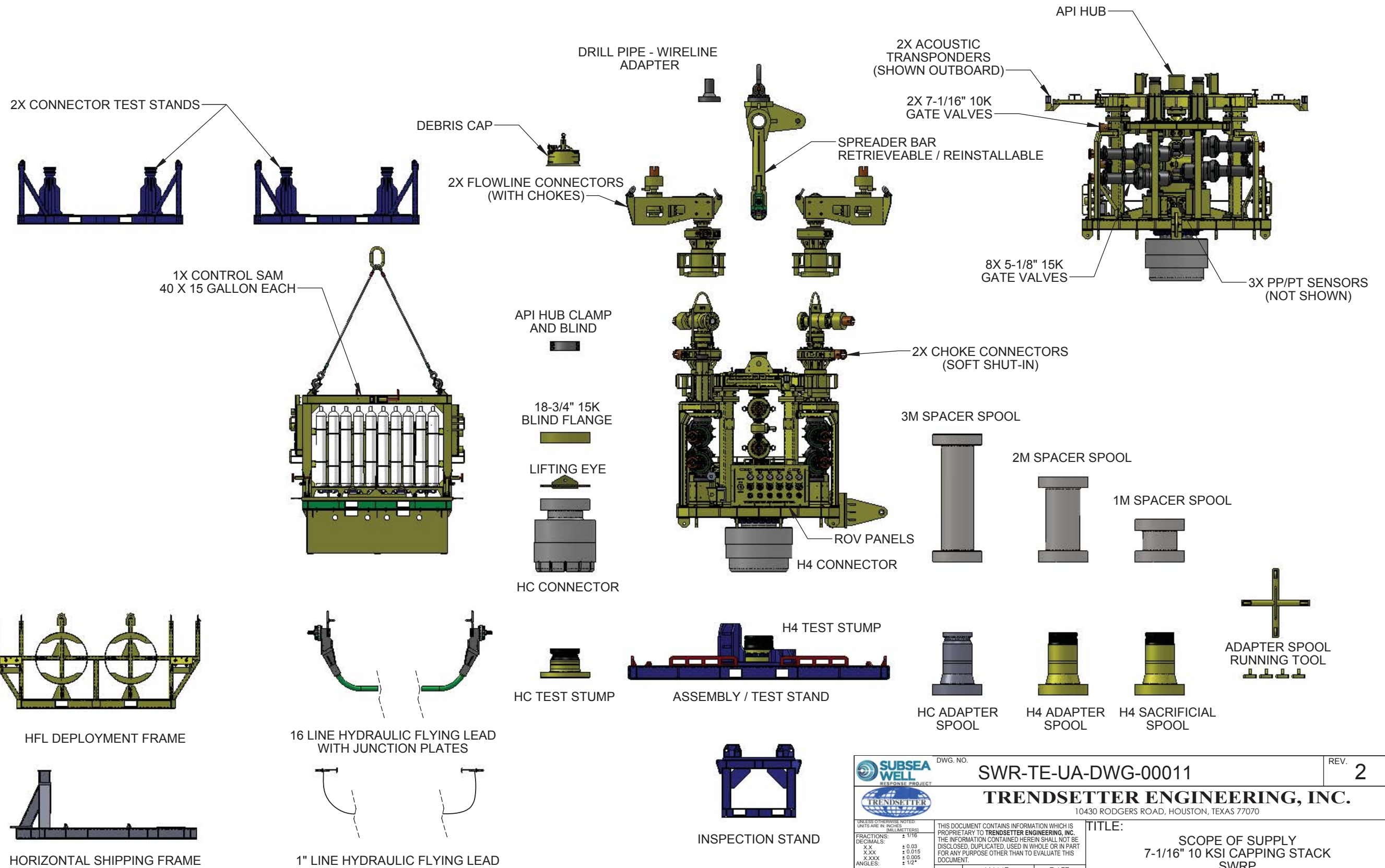


SEAL CHANGE TOOLING

8 7 6 5 4 3 2 1

	DWG. NO.	SWR-TE-UA-DWG-00010	REV.	2								
	TRENDSETTER ENGINEERING, INC. 10430 RODGERS ROAD, HOUSTON, TEXAS 77070											
<small>UNLESS OTHERWISE NOTED: UNITS ARE IN INCHES (MILLIMETERS) FRACTIONS: ± 1/16 DECIMALS: ± 0.03 .XXX ± 0.015 X.XXX ± 0.005 ANGLES: ± 1/2° CONCENTRIC: .005 BREAK EDGES: .03 MACH-SURFACE: 125/ </small>	<small>THIS DOCUMENT CONTAINS INFORMATION WHICH IS PROPRIETARY TO TRENDSETTER ENGINEERING, INC. THE INFORMATION CONTAINED HEREIN SHALL NOT BE DISCLOSED, DUPLICATED, USED IN WHOLE OR IN PART FOR ANY PURPOSE OTHER THAN TO EVALUATE THIS DOCUMENT.</small>			TITLE: SCOPE OF SUPPLY 18-3/4" 15 KSI CAPPING STACK SWRP								
<small>THIRD ANGLE PROJECTION</small> 	<table border="1"> <thead> <tr> <th>NAME</th> <th>DATE</th> </tr> </thead> <tbody> <tr> <td>C. WILLIAMS</td> <td>4/30/2012</td> </tr> <tr> <td>N. MASC.</td> <td>4/30/2012</td> </tr> <tr> <td>C. WILLIAMS</td> <td>4/30/2012</td> </tr> </tbody> </table>	NAME	DATE	C. WILLIAMS	4/30/2012	N. MASC.	4/30/2012	C. WILLIAMS	4/30/2012	DWG. NO. TEI-100695-LO-02	REV. B	SCALE: NTS SHEET 2 OF 2
NAME	DATE											
C. WILLIAMS	4/30/2012											
N. MASC.	4/30/2012											
C. WILLIAMS	4/30/2012											

REV.	DATE	DESCRIPTION	BY	CHECKED
A	5/2/2012	INITIAL RELEASE	C. WILLIAMS	N. MASC.
B	1/15/2013	UPDATED SCOPE OF SUPPLY	M. STEEL	C. WILLIAMS



NOTES:

		DWG. NO. SWR-TE-UA-DWG-00011		REV. 2
TRENDSETTER ENGINEERING, INC. 10430 RODGERS ROAD, HOUSTON, TEXAS 77070				
<small>UNLESS OTHERWISE NOTED: UNITS ARE IN INCHES (MILLIMETERS) FRACTIONS: ± 1/16 DECIMALS: ± 0.03 XXX ± 0.015 X.XXX ± 0.005 ANGLES: ± 1/2° CONCENTRIC: .005 BREAK EDGES: .03 MACH-SURFACE: 125</small>		THIS DOCUMENT CONTAINS INFORMATION WHICH IS PROPRIETARY TO TRENDSETTER ENGINEERING, INC. THE INFORMATION CONTAINED HEREIN SHALL NOT BE DISCLOSED, DUPLICATED, USED IN WHOLE OR IN PART FOR ANY PURPOSE OTHER THAN TO EVALUATE THIS DOCUMENT.		
TITLE: SCOPE OF SUPPLY 7-1/16" 10 KSI CAPPING STACK SWRP		DWG. NO. TEI-100696-LO-02		REV. B
SCALE: NTS		SHEET 1 OF 2		

8 7 6 5 4 3 2 1

D
C
B
A

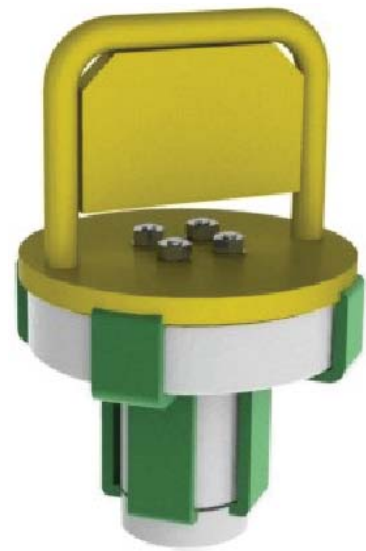
D
C
B
A



CONNECTOR
SOFTLAND SYSTEM



CONNECTOR
DRAWDOWN TOOL



HUB CLEANING TOOL



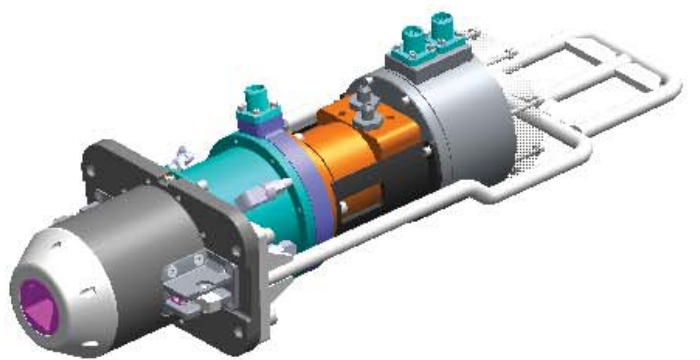
NITROGEN BOOSTER PUMP



TOOL CHEST WITH HAND TOOLS



BORE TEST HPU



CLASS 4 TORQUE TOOL



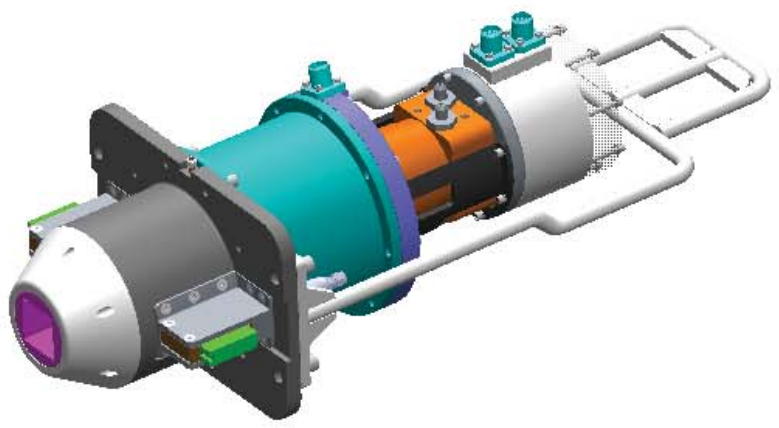
API FLANGE NUT TORQUE TOOLS



PNEUMATIC PUMP FOR
FLANGE NUT TORQUE TOOL



TOOLING HPU






CLASS 5 TORQUE TOOL



SEAL CHANGE TOOLING

8 7 6 5 4 3 2 1

		DWG. NO. SWR-TE-UA-DWG-00011		REV. 2							
		TRENDSETTER ENGINEERING, INC. 10430 RODGERS ROAD, HOUSTON, TEXAS 77070									
<small>UNLESS OTHERWISE NOTED: UNITS ARE IN INCHES (MILLIMETERS) FRACTIONS: ± 1/16 DECIMALS: ± 0.03 .XXX ± 0.015 X.XXX ± 0.005 ANGLES: ± 1/2° CONCENTRIC: .005 BREAK EDGES: .03 MACH-SURFACE: 125/ </small>		<small>THIS DOCUMENT CONTAINS INFORMATION WHICH IS PROPRIETARY TO TRENDSETTER ENGINEERING, INC. THE INFORMATION CONTAINED HEREIN SHALL NOT BE DISCLOSED, DUPLICATED, USED IN WHOLE OR IN PART FOR ANY PURPOSE OTHER THAN TO EVALUATE THIS DOCUMENT.</small>		TITLE: SCOPE OF SUPPLY 7-1/16" 10 KSI CAPPING STACK SWRP							
<small>THIRD ANGLE PROJECTION</small> 	<table border="1"> <thead> <tr> <th>NAME</th> <th>DATE</th> </tr> </thead> <tbody> <tr> <td>C. WILLIAMS</td> <td>5/2/2012</td> </tr> <tr> <td>N. MASC.</td> <td>5/2/2012</td> </tr> <tr> <td>C. WILLIAMS</td> <td>5/2/2012</td> </tr> </tbody> </table>	NAME	DATE	C. WILLIAMS	5/2/2012	N. MASC.	5/2/2012	C. WILLIAMS	5/2/2012	DWG. NO. TEI-100696-LO-02	REV. B
NAME	DATE										
C. WILLIAMS	5/2/2012										
N. MASC.	5/2/2012										
C. WILLIAMS	5/2/2012										
SCALE: NTS		SHEET 2 OF 2									